

Minnesota's Vision for a P-20 Education Longitudinal Data System

Minnesota Office of Higher Education

Meredith Fergus Meredith.Fergus@state.mn.us

Alexandra Djurovich Alexandra.Djurovich@state.mn.us

Mark Misukanis

Today's presentation

- Legislative Rationale
- Roles of Institutions and State Agencies
- Structure and Governance of the LDS
- Establishing a Research Agenda for Minnesota
- Future Directions

Some History

Minnesota Higher Education Coordinating Board

- 1983 enrollment data collection begins
- Student unit record data
- Public and private institutions
- Institutions participating in state financial aid programs

Legislative Rationale

- Political Pressures
 - The Federal Government
 - State
 - Other national groups:
 - National Governor's Association, Data Quality Campaign
- Legal Authorizations
 - Minnesota data privacy law
 - OHE Enrollment data sharing agreements
 - ARRA and the America Competes Act

American Recovery and Reinvestment Act of 2009

Functions of the statewide p-16 education data system

- (i) identify factors that correlate to students' ability to successfully engage in and complete postsecondary-level general education coursework without the need for prior developmental coursework;
- (ii) identify factors to increase the percentage of low-income and minority students who are academically prepared to enter and successfully complete postsecondary-level general education coursework; and
- (iii) use the data in the system to otherwise inform education policy and practice in order to better align State academic content standards, and curricula, with the demands of postsecondary education, the 21st century workforce, and the Armed Forces.

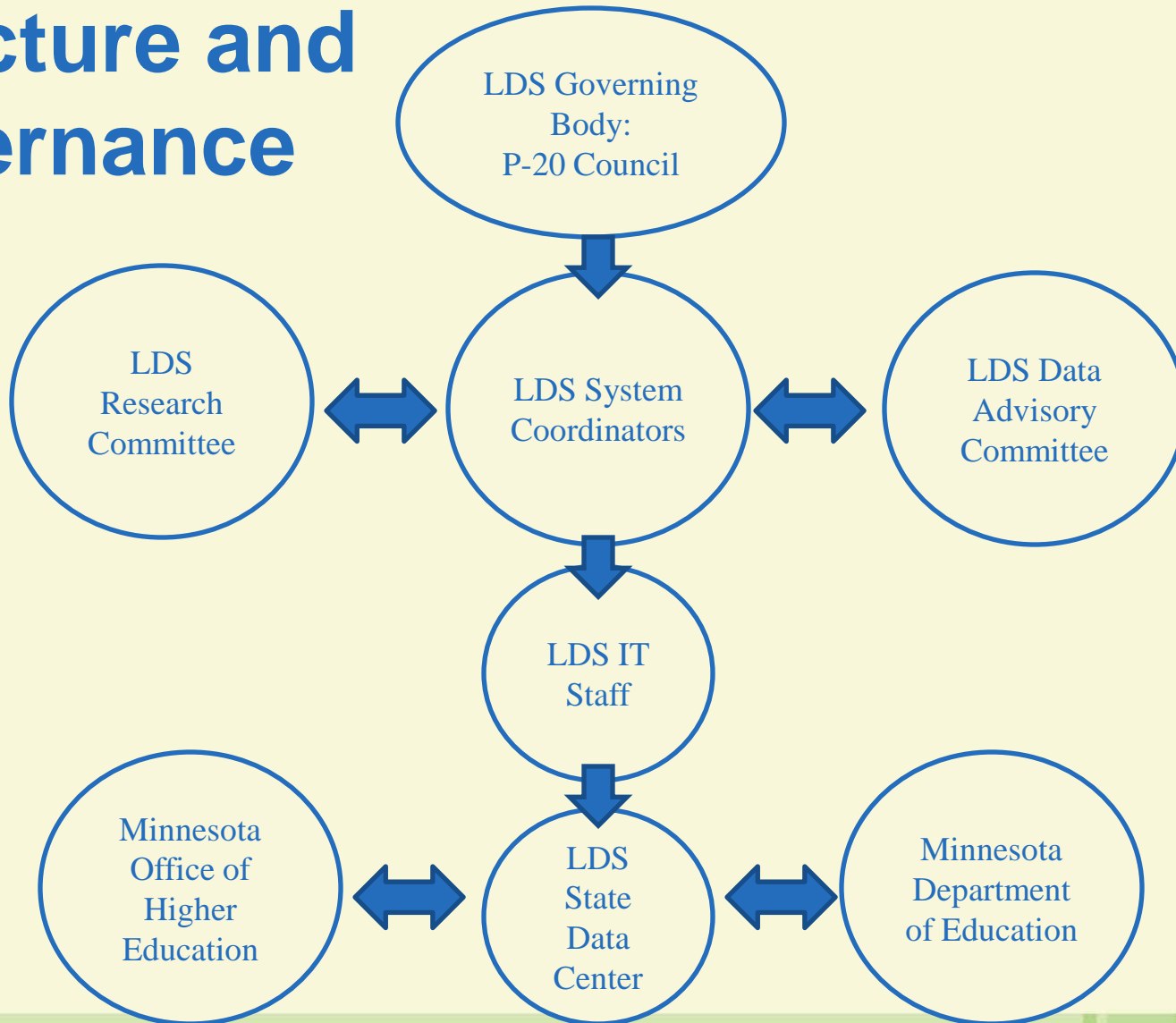
The Vision

- Link currently available data
 - K-12 enrollment and graduation data
 - Postsecondary enrollment and completion data
- Future linkages
 - Employment / workforce data
- Purposes
 - Identify predictors of long-term student success
 - Meet federal funding requirements
 - Data driven decision making

Roles of State Agencies & Institutions

- State Agencies
 - Maintain student confidentiality during data linkage
 - Maintain data integrity of new data system
 - Identify and conduct research for state level policy making using LDS data
- Institutions
 - Provide postsecondary education data to OHE
 - Serve as objective reviewers of state level research
 - Identify and conduct research using LDS data

Structure and Governance



Structure and Governance

- Governing Body
 - Approve research
 - Appoint research and data committees
- Research Committee
 - Develop and evaluate proposed research
 - Provide technical expertise
- Data Advisory Committee
 - Review technical specifications of proposals
 - Provide technical expertise on data structure, linkages, user interfaces

Structure and Governance

- Minnesota Office of Higher Education & the Minnesota Department of Education
 - Secure funding, staff
 - Serve on research and data advisory committees
 - Conduct state level research
- Others
 - LDS System Coordinators
 - LDS IT Staff
 - Office of Enterprise Technology (State Data Center)

Establishing a Research Agenda

Three initial areas of state-level research identified

- System Performance Analysis
 - Performance of the overall educational system
- Educational Attainment Gap Analysis
 - Performance of students defined by their demographic, socioeconomic or geographic characteristics
- Program and Intervention Analysis
 - Evaluation of the collective impact of large and small scale intervention programs

Initial Data Collected for the LDS

- Attendance
 - School & district, Year; College, Term
- Demographics
- Enrollment
 - Graduation status; Student type
- Academic Performance and Testing
 - MCA test; Credits taken, Remedial credits
- Special Services
 - PSEO, Free/reduced price lunch, Title I;

Future directions

- Sharing the vision
- Federal grant applications
- Ratification by Minnesota's P-20 Council
- Establishment of data sharing agreements
- Development of technical specifications & construction of system